

MusicFinderView

This color denotes program controls.

With it you can

- Display, edit, add and delete data from music finder.
- Process records that reference style, midi, or audio files that reside on storage media. This includes display, editing, and generation of a missing file listing.
- Operate on NetCommon files (i.e. files obtained from the Internet Direct Connection or Yamaha's web site) and convert them to specific instrument files.
- A music finder listing can be rearranged, sorted, or saved as a tab delimited text file for use with spreadsheet, word processing or database programs.
- Use a selected entry to setup your instrument with the Tempo, Preset Style, Starting Section and Subsequent Section directly from your PC.
- Search the music finder file for records with full or partial matches of Music, Style, Genre or Keyword text. You can use the results to create custom MusicFinder files (e.g "Christmas", "Wedding Gig") or Repertoire lists for a style, song, Genre or Keyword.
- Create a performance PlayList that can be edited printed or saved as a text delimited file.
- Convert music finder files from one instrument to another. Edit and Replace functions may be used to select styles which exist in the target instrument.
- Create customized music finder files by saving records that have been identified via a search operation or manual selection. This useful for generating databases based upon musical tastes, or for use in live performance situations.

For a on-line tutorial, go to

<http://www.psrtutorial.com/lessons/playing/mf/80/MFView.html>

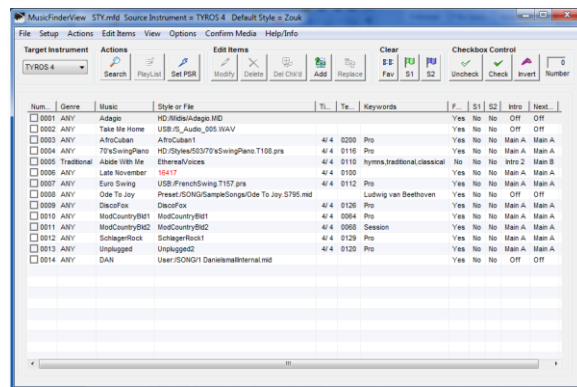
Setup

If operating under Vista or Window 7, you may have to installing or Run the program as an administrator. See Appendix D

If you are using the program for the first time or doing conversion to another instrument, select your instrument or the intended instrument as the Target Instrument .

Displaying the music finder data

- Click the **Open File** menu item and select an existing Music Finder file. If you want to start from an empty listing, open a Blank.mfd file for your instrument (e.g. Blank_PSR-3000.mfd) in the C:\Program Files\MusicFinderView folder.



The source instrument for the file is displayed in the window title area.

Each line displayed corresponds to one record in the file.

MusicFinderView automatically determines the source instrument, displays it along with the filename and opening default style in the program's title bar.

Styles displayed in red are not available in your instrument and need to be replaced or the item will be ignored when the file is saved. See the editing discussion below.

A style number instead of a name (e.g. 16417) indicates that the entry references a non Preset or media style. Numbers > 65280 reside on a memory stick; lower numbers are installed in the User Area . Please see the Appendix for a discussion of UserStyle numbers.

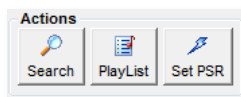
Note: The Intro and Section fields are only valid for the Tyros 2, 3, 4 & 5 /PSR-3000/ CVP-305/ CVP-307/ CVP-309 /PSR-S900/CVP-409/CVP-505/PSR-S700/PSR-S710/PSR-S910 /S950/S750/S970/S770 and will not function in other instruments.

- **To rearrange columns**, using the left mouse button, click on the column heading (e.g. Genre) and while holding the button down, drag the column heading to a new location and release the mouse button.

Genre	Music	Style or File
Latin	A Banda	Samba

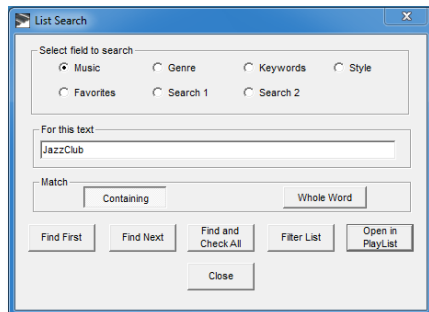
● **To sort records**, click on the column heading that corresponds to how you want the data sorted. For example, to sort by Music, click on the Music column header. To invert the sort, click on the header again.

● **To search records**, after opening a file, click on **Search**.



Click the appropriate the option button in the Select field to search box, enter the search text, and then click **Find First**, **Find Next**, **Find and Check All** or **FilterList**.

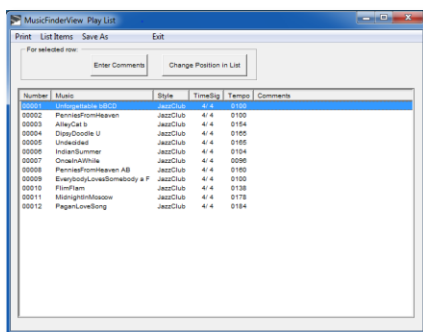
Find First and Next will locate the row that contains the search text and select it without putting a check in the checkbox (you can do this manually, if desired).



FindFirst and Next will locate the row that contains the search text checkbox (you can do this manually, if desired). Find and Check All will identify all rows containing a match by placing a check in the box at the beginning of the row.

Filter List will delete all items not found by the search operation.

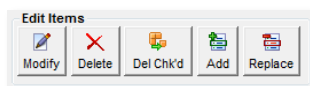
Open In Play List will create a Repertoire list of all the songs that use a style, all the styles that can be used for a song, all the styles/song that belong to a Genre, etc.



The default search is **Containing**, which means that a match will be identified if the search text appears anywhere in the field. Select **Whole Word** to search for an exact whole word match, including capitalization.

Editing the Music Finder file

● **To add a record**, depress the **Edit Items/Add** button and provide the data requested.



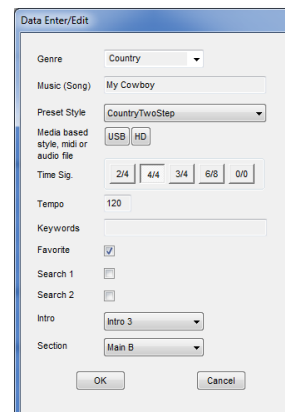
MusicFinderView presents all the currently used Genre choices in the selection box and they can be accessed by either clicking on the arrow or entering

the leading characters of the Genre. If you want to make a new Genre category, type it in the box.

Styles are selected in a similar manner, but for most PSR's the choices are limited to those in your instrument.

For the Tyros 4/5, PSR-S910/ 710 / S950/ S750, S970/ S770 you can also choose to add or edit records to include styles, midis and audio files (wav or mp3) located on a USB memory **that is attached to the PC**.

The Tyros 4/5 can access files on the hard drive if the Tyros **is in Storage Mode**. Click the USB or HD button and browse to the file, select it and click the Open button.

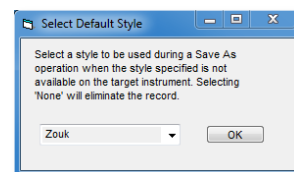


● **To modify a record**, first select the record by clicking anywhere on the line containing the item, then depress **Edit Items/Modify**, or, depending upon the **Options/Double Click Action/ Edit Record** (enabled by default), just double click the record. Change the data as desired, and then click OK when finished.

Note: Some fields (e.g. Style, Intro, Section) are limited to the selections listed. Others (e.g. Genre, Keywords, music may have any text). If **Options/Allow User or Unknown Styles** is checked, the items are automatically added to the bottom of the style selection list on the edit window. Unless you are certain that your instrument has such a voice in the User Area, select a style from the top of the list.

● **To correct missing styles**. Any Preset styles that are in a music finder file that are not available on your instrument will be identified by colored text and will be deleted or converted a default style during a SaveAs /MusicFinder File operation.

Use the **Options/Change Default Style** menu item and select "None" to delete or select a little used style as the default style.

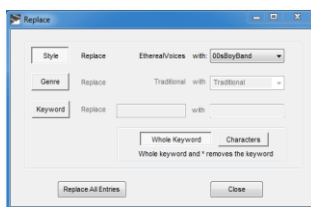


When the database is installed in the PSR, you can use occurrences of the default style to identify ones that should be changed.

To use a more appropriate style than a missing or default style, after displaying the data, use **Modify** to change one record, **Replace** to change all occurrences of one style in the database, or the **Edit Item/Replace/Auto Replace** menu item to change many styles based upon a user customized list.

● To replace/ remove/add data in multiple records

To find and replace all occurrences of a style, genre or keyword in the file, click [Edit Items/Replace](#), select the desired field and replacement text, and then click and then [Replace All Entries](#).



If you wish to remove all instances of a keyword, use a single * as the replacement text.

To add a keyword to all entries, select the [Edit Items/Add Text to All Keywords Edit](#) menu item.

● How to replace many styles in all records

If you are aware of styles that you always want to replace with other styles, edit the Style Replacement Table.txt file in the MusicFinder folder.

```
12-8 Ballad;16BeatBallad1
16BeatBallad2;16BeatPop
30sBigBand;40sBigBand
```

When you click on the [Edit Items/Replace/Auto Replace](#) menu item, all occurrences of the style listed before a “;” will be replaced by the style after.

● To delete one or more records

Select a record by clicking anywhere on the line containing the item, then depress [Edit Items/Delete](#), or check mark the records that you wish to delete by:

- 1) Checking the box at the beginning of each record,
- 2) Use the buttons in the Checkbox Control box, or
- 3) Find and Check All in [Action/Search](#)

Then Depress [Edit Items/Del Chk'd](#).

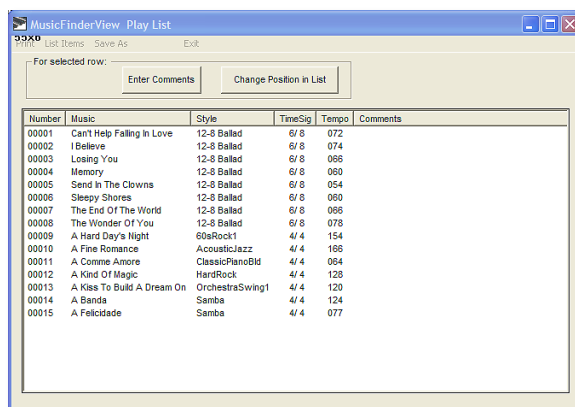
● **To change the S1 or S2 setting**, select the record and depress [Modify](#), or left click the item, then right click and select [Set S1](#) or [Set S2](#).

● **To change the Favorite setting**, a) select the record and [Edit Items/Modify](#), b) left click the item then right click and select Set Favorite or c) if [Options/Double Click Action/Toggle Favorite](#) has been checked, double click the record.

● **To clear all Favorite, Search 1 or Search 2 settings**, depress the Fav, S1 or S2 buttons in the Clear box.

Creating and editing a Play List

● **To create a play list**, place checkmarks manually at the beginning of each record, place them by using the buttons in the Checkbox Control box, or by using Find and Check All in Search. Then click on [Actions/PlayList](#) button.



To add comments to an entry, first select the row by clicking on it, then click [Enter Comments](#), type in the comments text, and click OK.

To Change the position of any record in the play list, click [Change Position](#), enter in the new position number and click OK.

The columns can be rearranged and the records sorted in the same manner as described above.

To change the format of the listing, click the [List Items](#) menu item.

● To sort the playlist in a user determined order,

Owen Bennett offered the following suggestion: “Precede the song title with a number corresponding to its order in the play list, for example: 01a Baby Face, 09b Words, 11a Mustang Sally, 99h Under the Boardwalk, etc, etc. The numbers allow for 99 songs plus as many added letters as required to put and take from the program any time, and the song titles remain well aligned visually. The song sorting function as a text sort always sorts the numbers first, allowing an added sorting capability.”

Note: Comments and reordering are preserved until the PlayList window is closed with the Exit menu item. If you wish to add records to a modified list (i.e. one where the order has been changed or comments added), go back to the main display by clicking on the MusicFinderView window or by minimizing the PlayList window. After making additions/deletions, click [PlayListView](#) or click on the PlayList window to update the display.

Printing records

To print MusicFinder or PlayList records, Click on [File/Save/Delimited Text File](#) menu item.

Enter a filename and then click [Save](#).

Then open the saved file in Start/Programs /Accessories/ NotePad or WordPad, or Excel or a word processing program.

To properly view in Excel, use the Wizard and set all columns to Text, or before adding any items, select all columns, click Format/Cells and change the setting to Text.window.

Note that the MusicFinder database files are large and you may want to limit printing to a specific region. To do this, use the “pages” option that is available when the print window appears.

Saving a music finder file

Click on **File/Save/MusicFinderFile** menu item. Select whether or not to save All Records or just Checked Records, and then click **Save**. Enter a filename and then click **Save**.

If the Target instrument and Source instrument are the same (which it would be if you were editing an mfd from your own machine) then:

If **Options/ AllowUser Styles** =Off, then the Default Style is used for any numbered UserStyles. If the Default Style =“None”, records with User Styles will not be saved.

If **Options/ AllowUserStyles** =On, then the style number is used for styles located in the User memory area. See Appendix A for cautionary statements.

When an mfd file is opened, View **View/ConversionLog** menu item provides a printable list of records that will be converted in the SaveAs operation.

Combining records from two or more database files

Load the first database file and checkmark the entries you want and click **File/Save/MusicFinder File** and select **Checked Records Only** and **Save** to a new file name. Repeat for the other files and save all to your portable media.

Then, on the PSR, depress Function/Utility/System Reset and select Music Finder at the bottom right on the screen. Tab to the portable media, and select the first file. If you want to make a new MFD database, respond with Replace, otherwise choose Append. Then select each of the other files, and respond with Append.

Exporting/importing a music finder as a tab delimited text file

Click on **File/Save/Delimited Text File** menu item. Enter a filename and then click **Save**. To properly view in Excel, use the Wizard and set all columns to Text, or before adding any items, select all columns, click Format/Cells and change the setting to Text.

To import a text delimited database file back into MusicFinderView, requires:

- 1) The number and order of the fields must be the same as the export file,
- 2) The fields must all be defined as text fields, and
- 3) If there is a header row, MusicFinderView will expect it to be the first row.

If you are adding records to a delimited file in another program, be sure to use the same stylenames that are used by this program. You can view, print or copy the target instrument style list (or a style name for pasting in your application) by clicking the Style List menu item.

Importing and appending (add) records to an existing data base in MusicFinderView

First **File/Save/Delimited Text File** any databases that you want to combine with an existing database. Then open the mfd database file that is to receive the records. If you want to start from an empty listing, open the Blank.mfd file for your instrument (e.g. Blank_PSR-3000.mfd) in the install directory. Then click on the **File/Import Delimited Text File** menu item and select a file to add. The imported file's entries are added to the open file.

Please note that MusicFinderView assumes that the import file is from the same instrument as the loaded file. It does not translate between different style numbering schemes.

By default, an entry referencing a style that does not exist on the source instrument will be discarded. To see a list of these items, click the **View/Delimited File Load Log** menu item.

To accept delimited text file entries with unknown or misspelled style names, or to accept user style numbers, click **Options/AllowUser or Unknown Styles**. This is not necessary when importing files with style, audio, or midi file references located on USB or a hard drive. When this is checked, any unknown styles names will be displayed in Red, and should be edited to the correct names before saving the database; otherwise the Default style will be used when saved as a music finder file.

See the discussion of User Styles in the appendix to understand possible problems when dealing with databases that include User Styles (entries referencing styles stored in the User Area).

Programming the PSR/Tyros from MusicFinderView

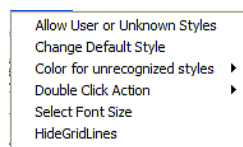
To program an instrument connected via midi with the style, tempo, starting and subsequent section data:

Select the midi driver by selecting the **Setup/MidiDevice** menu item. Then select a music finder entry and depress the **Actions/Set PSR** button.. A single note is played to indicate that the process is complete.

Note: The style will be selected only if it is a preset style. User or media based styles or other file types are not supported.

Program Options

Clicking the **Options** menu item presents this display:



Allow User ... Styles permits style numbers other than the preset styles for the target instrument. See appendix for discussion of User Styles.

Change Default Style allows you to choose a style for the program to use when the preset style is not a in the target instrument style (indicated in red or other color). Select "None" if you do not want these records included in a save operation.

Color ...style allows changing the color for problem styles.

Double Click Action allows select of the action taken when a database item is double clicked.

Select Font Size allows changing the font size for readability or to address problems in printing.

Hide Gridlines determines if lines are visible or not.

For tutorials on using this program

http://www.psrtutorial.com/lessons/playin/mf/80_MFView.html

Appendix

A. User Styles and style numbers: Each instrument has its own series of style numbers for the preset styles. If you load a music finder file created on one instrument (e.g. PSR-1000) to a different instrument (e.g. Tyros) without converting it first in MusicFinderView, then the style names and numbers will be wrong.

If you save a style to the user memory of the PSR and the style has a music finder entry built into the style,

then these entries will automatically be added to you music finder database. Likewise, in the PSR/Tyros, you can add entries that reference styles stored in the user area to the music finder database. If you subsequently remove the styles, the database entries will remain in the PSR and will be restored whenever the styles are reloaded. When a database with entries referencing styles stored in the user area is displayed in MusicFinderView, the styles will only be identified by high numbers, e.g. 16110. Numbers larger than 65280 signify a style that was stored on a USB memory.

If you obtain a music finder database that was created on someone else's machine, any user style numbers may have no meaning on your machine, or the styles identified may be different.

In order to prevent styles from being misidentified the MusicFinderView default when saving a music finder database is to eliminate any entries where the style is not a preset style on the target instrument. You can prevent the entries from being discarded by using **Edit** or **Replace** to select a preset style or you can select a Default Style in **Options** that will be used whenever an unknown style is encountered.

Likewise, when importing a text delimited file, all entries that are not on the source instrument are eliminated. This protection can be inhibited by checking the entry under **Options/Allow User Styles**.

If you add or edit entries in MusicFinderView and want to reference user styles, you must use valid user style numbers. The only way to determine these numbers is by observing an existing entry. Unfortunately, there is no cross reference between these strange numbers and the style names. You must determine this through observation. It also appears that the internal assignment of user style numbers may change as other items are added or removed from the user area. Therefore, you cannot depend that the user style numbers will remain the same.

Great caution is advised when dealing with User Styles. The recommended mode of operation is to use MusicFinderView's default setting that will display, but not save, entries referencing User Styles. If such an mfd file is then loaded into the instrument with the Replace option, the MusicFinderDatabase may be updated to reflect any user styles by deleting and reinstalling all styles in the User Area.

To add entries in MusicFinderView that reference styles stored in the User area where you are unsure of the integrity of the numbers, select a Default Style under Options and then use the name of the Default Style keyword to locate and change these entries to the user styles after the file is loaded into the instrument.

B. Shortcut Keys

The shortcut keys may be used to access most of the operations and settings in MusicFinderView via the menu. To access an item, while depressing the Alt key, select the letter indicated. If there are several choices, then depress the second letter.

File

Alt F then	
O	Open File
S	Save then
	M Music Finder File
	D DelimitedTextFile
P	Print
I	Import Delimited File
X	Exit

Setup

Alt S then	
T	Target Instrument
M	Midi Device
S	Source Instrument then
	A Auto
	N Style Number

Action

Alt A then	
S	Search
A	Add to Play List
P	Setup PSR

Edit List

Alt E then	
D	Delete then
	I Item
	C Delete Checked
A	Add item
M	Modify item
R	Replace then
	I Item
	A Auto Replace
C	Clear then
	F Favorites
	1 Search 1
	2 Search 2
B	Checkbox then
	C Check item
	U Uncheck Item
	I Invert All
K	Add text to all keywords

View

Alt V then	
S	Style List
C	Conversion Log
D	Delimited File Load Log

Options

Alt O then	
A	Allow User or Unknown Styles
S	Change Default Style
C	Color then
	R Red
	B Blue
D	Double Click Action then
	E Edit Item
	T Toggle Favorite
F	Font Size
H	Hide Gridlines

Help/Info

Alt H then	
Q	Quick Start Guide
M	Manual
C	Contact the Author
A	About

C. Style Names

Over time, Yamaha has changed the name of some styles by a) adding a number when there was more than one, b) adding a word (ChaChaCha vs. ChaCha) or c) more dramatically changing the name (Swing2 vs. OrchestraSwing2). Since MusicFinderView uses the names of the styles to perform the conversions between the instruments, the style names used by the program may have minor difference from those on your instrument.

D. Installing/ Error message problems

1) If operating under Vista or Window 7

Install the program as an administrator by right-clicking the installer file and select "Run as Administrator". Answer "yes" to the warning message.

If installed, use Windows Explorer, navigate to the C:\Program Files (x86)\MusicFinderView folder and mark MidiPlayer.exe file to run as an administrator by

Right clicking the program and select Properties.

Under the compatibility tab, select Run This Program as an Administrator.

Click Apply and OK.

2) Error message: "Could not open logfile C:\WINDOWS\ST6UNST.000"

Try deleting the file ST6UNST.EXE in the directory C:\WINDOWS .

User's Agreement

By installing this software, the user signifies agreement with the following:

The author, Michael P. Bedesem, copyrights this software with all rights reserved. The author retains all title and intellectual property rights.

No warranty is made regarding the suitability of this software for any application, or that operation will be uninterrupted, or error free. The author is not responsible for problems that result from installing or operating this software, and shall in no case be liable for special, incidental, consequential, indirect or similar damages arising howsoever.

The user agrees not to make changes or modifications to the software and not to decompile, disassemble, or otherwise reverse engineer the software.

The software is provided free for private, non-commercial use. The user agrees not to sell this software or bundle it with other software for commercial enterprise, without the express written consent of the author.

The software may be distributed to other users as provided above as long as all components, including this agreement, are included.

The user is responsible for using this software legally and in accordance with any copyrights that may pertain to third party style files.

This agreement constitutes the entire agreement between the author and the user, and may be modified only by written agreement between the parties.

Communication & Support

Any questions, comments, suggestions for modifications or improvements, or problem reports would be most welcome. Please forward these to the author at mpb@sover.net.

Acknowledgements

Alan Jackson indicated a need for using Music Finder database information with other instruments and prompted this program's development. He also provided major assistance in debugging the program, including discovery of a major incompatibility issue between programs developed on different Microsoft operating systems. His understanding, cooperation and resourcefulness are greatly appreciated.

Dave Sheppard's sharp eyes found some bugs during testing and he has also made some welcomed suggestions.

Joe Walters has done much to increase the usefulness of music finder files, and the performance of this program. Included in this is his detection of errant behavior when sorting or saving checked files, and his suggestions for the checked number display and the Delete Checked function.

Bob Durham is responsible for the program functioning with the PSR-1000. It took a couple of tries, but with Bob's assistance, there was success. Bob has also contributed some useful ideas that have made the program easier to use, and has helped greatly in eliminating problems in many areas.

Scott Langholff had some problems that only could be solved by working with the Favorite and Search flags and these facilities were added to assist him.

Antonio Marella cares a lot about music finder database files and was instrumental in enabling this program to become Tyros compatible. In addition, he convinced me that an Import/ Text Delimited File function was extremely useful for users wishing to re-enter the results of complex analysis performed by a database program.

Emile Gemmeke has created the style dat files for the 2100 and 1100, and corrected some errors in the 1000/2000 files.

Chris Grey was the first to contact me regarding inclusion of the CVP204-10 series and created the data file for these instruments. Unlike when I do it, his file was without error. Thank you, Chris.

Thanks to Owen Bennett for the suggestion on sorting a Playlist.

Joe Walters kindly took time from his oversubscribed schedule to create the first reference files for the PSR- 3000 and has helped to define the Intro and Section data fields. And Gerd at gfs [GFS-SOFT@t-online.de] and Mike Perryman helped me decode the new system that Yamaha uses for 3K styles. Their assistance was critical to the final result. Gary Diamond, with remarkable patience, helped me find some of the problems in the style assignments.

Antonio Marella suggested the Replace function and, along with Joe Walters, requested some means of retaining entries even when the style did not exist on the target instrument. Antonio also requested the word match search function and many of the features that appeared in version 2.0.0.

Bob Durham did extensive testing on V1.7.X and has once again done a lot to improve the operation of the program.

Jaroslav Ferlez requested the CVP-305 functionality and assisted in testing V1.8.1.

Graham Crosby requested the Keyword_add feature as an aid to include an author reference to the keyword field.

Owen Bennett requested quicker ways of setting favorites. The right click function and the Optional use of double clicking are in response to his request.

Lawrence [lawrence@3rddawn.freemove.co.uk] requested the support for the PSR-1500 and was instrumental in developing the necessary .dat file.

Reinhard Klein wanted the program to support the CVP-309 and edited the style data file to make it possible.

Dominique P. [dominique_infos@yahoo.fr] located a several errors in 2.0.2 and has suggested the explanation of why some style names used in the program may be slightly different than those in the instrument.

Werner Maus took valuable time away from his new Tyros 2 to help in ensuring compatibility with this instrument, including finding a problem which had been in the program for many versions. Thank you Werner.

Kees Wisse requested an easier way to set S1 or S2. The right click functions were added in response.

Mikey Maestro was the first to request the inclusion of the S900 and assisted in confirming some of the style number specifications. The inclusion of the styles unique to the S900 was made possible by the effort of Phil Hall, a great supporter of the PSR users.

Jørgen Sørensen [js@jososoft.dk] requested that it be possible to associate MFV and have it automatically open the file, and to warn if the file was closed without having been saved. Both good ideas were included in 2.2.2. Jørgen also contributed some corrections to the .dat files that were included with version 2.2.8.

Maurizio Guglielmini realized that the style definition file for the CVP-305 was incomplete and made all the corrections that were subsequently installed in version 2.3.0. Thank you Maurizio.

Peter [borduurwerk@pjotr.knutselt.nl] urged me to support the CVP-409 and provided the test file and identified the missing styles to make it possible.

Many thanks to Bob Green for providing the PSR-S700 Music Finder that enables the inclusion of this instrument to MFV with version 2.3.4.

The idea to have MusicFinderView be able to select the Style, Tempo, starting and subsequent section on the PSR /Tyros was proposed by Vince Mistretta (vmistretta1411@gmail.com). His motivation was to provide a way for blind arranger players to be able to

use the music finder entries, otherwise virtually impossible since the instruments do not support screen reading software. As it turns out, this facility could be useful for others who would like to access databases that exceed the instruments capacity, rapidly switch between MFD files, or organize their performance on a laptop PC.

Frank Jaqdis and Larry Armatage offered their help in including the PSR-S910 in MusicFinderView. Thank you both. This was completed in Version 2.4.3.

Warren Peters has been instrumental in the modifications that allow MFV to view and edit records from the PSR-S910 that reference styles, midis and mp3s located on a USB memory. Warren patiently provided files and testing over the weeks it took to include this facility.

Ash on PsrTutorial offered to help me include the PSR-S710 in MFV and provided the files and did the testing for Version 2/6/0. Thank you Ash.

Once again, Werner Maus has performed a valuable service in testing version 2.8.2 that has led to several corrections. I very much appreciate Werner's on-going assistance and support.

Somehow in the process of uploading version 2.8.3 the program became corrupted. Unfortunately, any Tyros 4 entries processed with 2.8.3 that reference the USB or Hard Drive will likely have been damaged. The program has been corrected with version 2.8.9. I apologize for any inconvenience that this may have caused. And special thanks to Scott for taking the time to report his findings.

Andreas Frank wanted me to add the CVP-505 and supported the effort by making the style list and identifying all the missing styles for version 2.9.8.

Bill Grosse has always helped me with program development and has partnered in helping decode the PSR-S950 style ids. Thanks Bill

Michael P. Bedesem
10/3/2015
V3.1.2