

MidiPlayer Manual

(This file generally appears better when printed)

See Quick Start Guide for condensed instructions

General Description

MidiPlayer is designed to:

Play files from a PC

Revoice instrument voices and OTS for your instrument

Repair files

Display and edit file data

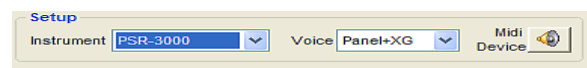
Processing many files at once

Pass files to sequencers and other utility programs

Accepts midi, pad, and styles from all recent instruments (but does not do style file format conversion)

First Time Setup

(Vista/Win 7 users-also consult Appendix R)



1) Select your instrument and a voice type.

Note: All Instrument, Voice and Preference/Options are saved at the end of the session and recalled when MidiPlayer is re-started.

Instrument: Select from Setup/Instrument. If you do not find your instrument in the list, use the closest one. Use GM Sound Card for playing files on PC. See Appendix F for instructions on customizing a voice list for your instrument.

Voice: Select using Setup/Voice. The choices:

Panel+XG: (Recommended) This option forces all panel voices in the midi to the corresponding panel voice in the selected instrument, but leaves any XG voices unchanged. This allows special voices that may have been selected by the midi author to remain. For many styles and midis, this is the preferred Voice Type.

Panel: Selecting this option attempts to force all voices to PSR panel voices (mega voices or LSB Bank select values>102). If your instrument has the voice specified in the midi, then it will use it. If it does not have that panel voice, it will be assigned one from the LSB 112 bank, or be assigned one from the XG bank.

XG: All voices will be assigned to the XG Bank.

GM: All voices will be assigned from the GM subset of the XG Bank and, if the instrument selected is a GM Sound Card, any drum events on midi channel 9 will be transferred to midi channel 10 and XG brush kit and other notes outside the GM range will be converted to the GM standard kit. See Appendix K.

Unchanged: No voices are changed.

2) Configure your Midi Device.



MidiPlayer will operate with any instrument or sound card that can play midi files and that has been designated as the default midi output. To change your assignment, depress

the Setup/Midi Device button. For all but Vista/ Win 7-8, the selected driver is listed under Midi Playback at the bottom of the page. For Vista/ Win 7-8, first check that you are using Yamaha's USB driver 3.03 or later

(http://www.global.yamaha.com/download/usb_midi/index.html) and then for Win 7, double click the PLWMidiMap.cpl file in the C:\Program Files\MidiPlayer folder. For Win 8 install one of the listed drivers at

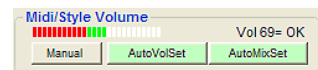
http://www.iososoft.dk/yamaha/articles/software_2.htm

3) Select your preferences. Use the Preferences/Options menu item.

☐ **Assign MegaVoices** will convert standard voices to megavoices if they exist. This conversion does not include the addition of effects such as fret noise and use of MegaEnhancer is preferred. For midis only, MegaEnhancer can be called from the GoTo/Sequencer or the GoTo/Other Program menu options. To convert styles with MegaEnhancer, use the program StyleMaker.

☐ **Disable channel after touch.** Some midis, created on the PSR-9000 with after touch events, may exhibit volume jumps on the Tyros. Since after touch is important to a midi's sound, it should generally be enabled.

☐ **Auto volume setting.** When checked, midi and style volumes are automatically adjusted to levels used by the PSR/Tyros. (Panel buttons are displayed in green when enabled). The recommended setting is On.



When converting modern Yamaha factory styles (which are uniformly mixed) from one instrument to another, Off is preferred.

☐ **Prompt when OTS is missing.** The recommended setting is On. If your instrument does not support style OTS, this will be ignored.

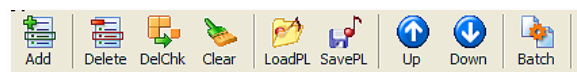
☐ **Convert Kar to Midi.** Karaoke files (.kar) record lyrics differently and may not display in some instruments. Check this option to perform automatic conversion of text events to midi format.

☐ **Quick Audition Styles.** When checked, only specific sections will play for faster reviewing. The recommended setting is Off. Change the default sections (Intro B, Main B, Ending B) by clicking Preferences/Edit Audition Sections List.

☐ **Prevent hung style notes.** Use to prevent instruments from playing a 'hung' note when a style is stopped.

4) Optionally, designate MidiPlayer as your computer's default midi player. This will enable you to add files to the program's PlayList by double clicking on the filename in Windows Explorer or Opening the file in your browser. To do this, see Appendix L.

Adding, Playing and Batch Processing Files



• Add files to the PlayList

- Add one or several files by clicking Add.

For multiple files, depress Ctrl while clicking on random files, or Shift and click on the first and then

the last file. Any midi, style, pad, voice, wav and mp3 file may be chosen. (The limit is approximately 1000 files). All compatible files can be mixed.

- Drag & Drop files or folders to the PlayList. (There is no limit to the number of files).
- Double click files in Windows Explorer or Open (right click) files in your browser or Explorer. (This requires association; see Appendix J).
- If the MidiPlayer is not running, it will start. If it is running, the file will be added to the PlayList. This allows auditioning midis or styles from a web site without having to explicitly download them first.
- To add a file from a zipped archive, right click/Open the .zip file and then drag and drop or double click the desired file.
- Use **LoadPL** to add a previously saved PlayList
- When files are added to the PlayList, Files that cannot be processed (e.g. corrupt, non midi style files) are displayed with the filename in red.

#	Song or Style File Name	Location	Size	Date	Tempo	TS	Key	Copyright	Mega?	Type	StyleTypeParts
001	Chris Isaac - Somebody's Crying.kar	C:\Documents an...	21,446	6/9/2005	115	4/4	C/Am	None	No	1	NA
002	Caribbean Fiesta S929.STY	C:\Documents an...	43,331	7/19/2004	105	4/4	None	None	Yes	0	SFF1/ABCD
003	Those_Were_The_Days.mp3	C:\Documents an...	5,611,729	1/28/2008							
004	GrandPianoFull S004.vce	C:\Documents an...	411	7/31/2001	120	4/4	None	None	No	0	NA
005	GuitarPicking2.pad	C:\Documents an...	1,944	11/13/2001	100	4/4	C/Am	None	No	1	NA
006	Hora-sarba2 86.sty	C:\Documents an...	22,519	12/25/2008							

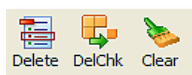
- The display of additional data such as tempo, key, style variations, etc can be turned off by checking **Appearance/ Hide File Details** and will only display when the file is selected.

Note: MidiPlayer does not convert style format. Styles used in the Tyros 3 use style format #2 whereas earlier instrument used style format #1. SFF1 files can be converted for use in Tyros 3 by the T3 File Converter program. SFF2 files can be converted to SFF1 by the Style Format Converter available at:
<http://www.jososoftware.dk/yamaha/>

StyleType/Parts
SFF1/ABCD

• Edit the PlayList

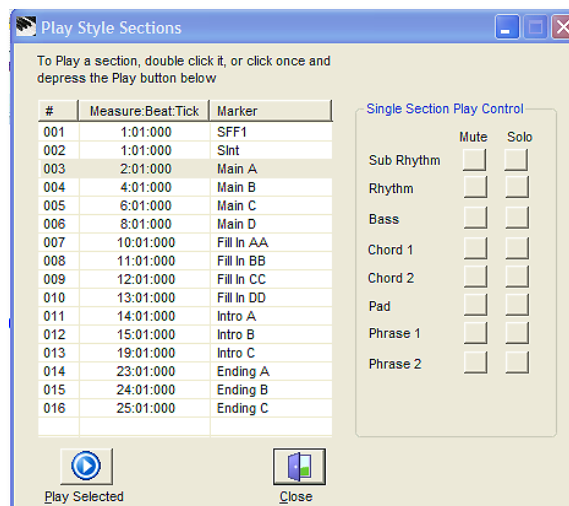
- Sorting/Adjusting: Click on a column heading to sort it. Click again to invert the list. Right click and select Adjust.
- To remove PlayList entries: Use **Delete** to remove a selected file, **DelChk** to remove all checked items, and **Clear** to remove all entries. Alters only the PlayList, not the files themselves.
- To rename the source file (useful when auditioning), right click on the PlayList entry and select Rename.



• Selecting and Playing Files

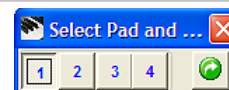


- To select a file anywhere in the list, left click on it once. To move forward or back, click on the → or ← arrows. To select and play a file at random, double click on an entry in the Play List.
- To play a single file, click **Play**. To play all files automatically from the currently selected file, click **PlayAll**. Depress **Stop** to halt the play sequence. The Set a Shorter Audition Time on the **Preferences** screen is useful if you want to play only a few seconds (e.g. 10) while auditioning midis. The **Repeat** button provides either for a single play or for continuous play.
- Normally, a style, or a midi with markers, will play all sections one after the other. For auditioning, it is quicker just to play representative sections. If you check the Quick Audition box in **Preferences/Options**, it will use Intro B, Main B and Ending B or the sections entered in the Edit Audition Sections List on the Preferences screen.
- To play individual sections, depress **View/ Marker**, select a section and then the **Play Selected** (or just double click the section desired).

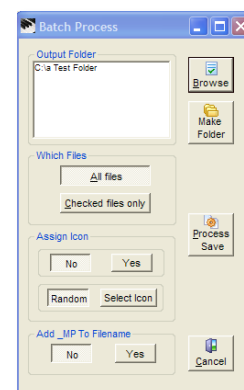


For styles only, the **View/Marker**

display allows you to Mute or Solo sections of the style (e.g. Main A, Intro B, etc.). Check the desired options before depressing Play or double-clicking the section. Note: if you depress Play on the main screen with the Marker screen open, the selected section will repeat. Close the screen to play the entire style. The status bar below the PlayList displays the section being played.



For multipads only, depressing Play brings up a small window for selecting the pad to play. (Note: Some pads on later instruments will not play properly outside the instrument).



● Process many files at once

To process many files depress **Batch**.



automatically,

Select (or create) an output folder and review the following options:

- ◆ Save all or only the checked entries on the Play List
- ◆ Assign a user selected or a randomly selected icon
- ◆ Add _MP to the filename to identify processed files

Click **Process Save** to begin. Wav and mp3 are bypassed.

To change the DefaultOTS.sty, see Appendix J.

Viewing and Editing Files

Clicking on a **PlayList** entry or changing the **Instrument** or **Voice** assignment will reload the file. Any edits will be lost. Remember to save you work.

● Voice View



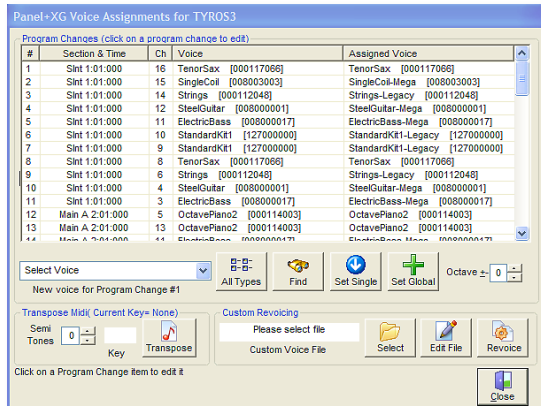
- To display or edit voice assignments depress **View/Voices**. The number in square brackets is the numerical identification of the voice, consisting of MSB bank select (leftmost 3 characters), LSB Bank select (middle 3 characters), and program change number (rightmost 3 characters).

Program numbers in MidiPlayer are "zero based", i.e. the first possible value is 0, not 1.

This is how program numbers are stored in a midi file and how they are listed in older Yamaha manuals.

For the Tyros 2-3, PSR-S900/S700 and PSR-3000, subtract 1 from the program number listed in the manual. If the GrandPiano voice in your manual has a program change = 1, then subtract a 1 to compare with MidiPlayer.

If a voice is shown without a description (i.e. just the numerical ID in brackets), it signifies that MidiPlayer does not recognize it as a voice that resides in any of the instruments (Voice column), or in the instrument selected (Assigned column). To add a voice assignment, **Goto PSRUTI/Revoicing/Standard Revoicing** and depress OK then Save and Exit.

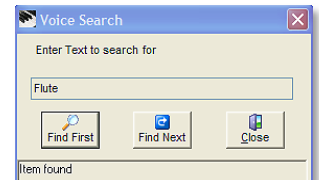


- To change an assigned voice assignment, first select the program change event by clicking anywhere on the line of the display. Then, select a voice.

To limit the voice list to certain voice types (All, Panel, XG,SA, MEGA, GM2) click on the button to the right of the Voice Edit box.

Adjust the **Octave+** control, if desired, and click **Set Single** to change the selected program change, or **Set Global** to change every instance of that voice in the style or midi.

- To search the voice list for any matches to entered text (e.g. flute, banjo), click **Find**. For next instance, click **Find Next**.

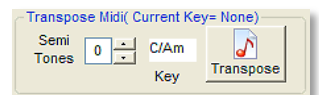


Find First and Find Next are also available by depressing Ctrl +F and F3 respectively.

Note that due to the nature of style files, the channel number displayed probably will not correspond to the PSR channel on which it plays. See Editing Style Voices in the Appendix.

● Transpose

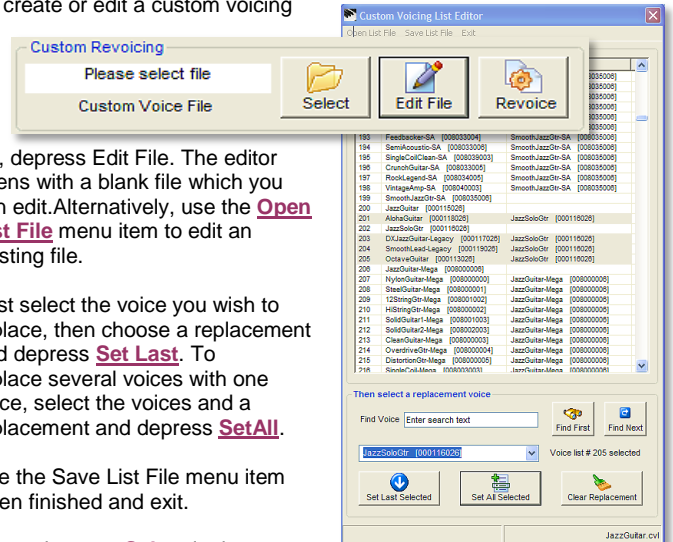
To transpose a midi to another key, on **View/Voice** enter, or select the number of semi tones using the up-down control, and depress **Transpose**.



● Custom Revoicing

To change Assigned Voices according to associations defined by a voice list, use Custom Revoicing. This allows you to choose a replacement for any voice that your instrument supports. For instance, you might want to replace electric instruments with acoustic instruments, or substitute voices typically encountered in jazz, etc.

To create or edit a custom voicing



list, depress Edit File. The editor opens with a blank file which you can edit. Alternatively, use the **Open List File** menu item to edit an existing file.

First select the voice you wish to replace, then choose a replacement and depress **Set Last**. To replace several voices with one voice, select the voices and a replacement and depress **Set All**.

Use the Save List File menu item when finished and exit.

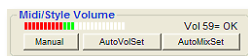
To revoice, use **Select** in the Custom Revoicing box to choose a Custom Voice File (Note:

if you have edited the file currently selected, please select it again), then depress the **Revoice** button.

Note: if you create a custom voicing list that you think might be useful to others, please e-mail it to the author for inclusion with MidiPlayer.

● Midi/Style Volume Control

An indication of the average volume of a midi/style is displayed by the tri colored volume LED.

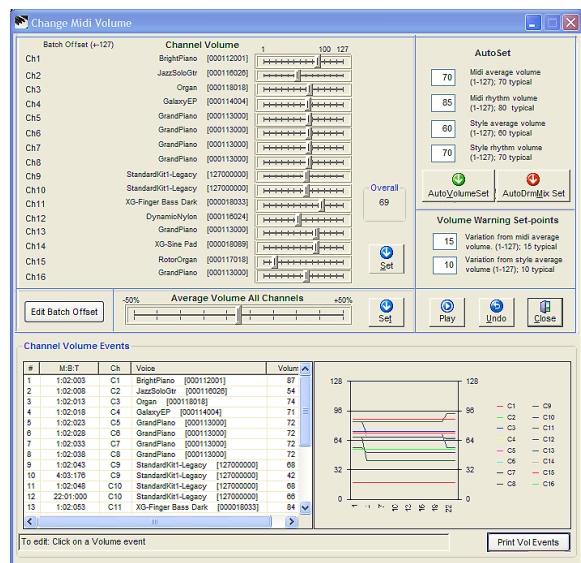


To automatically adjust the volume or volume/drum mix, click the appropriate button in the **Midi/Style Volume** box. If it is already green, the adjustment has already been done.

● Volume View



To view or modify the volume of the style or midi file, click the **Manual** button or the **View/Volume** button.



- To scale the average volume to the value indicated in the AutoSet box, click the **AutoVolumeSet** button. This usually is the best option for midi and style files when the most likely problem is that they are too loud or too soft. The target value can be defined separately for midis and styles and can be tailored for your instrument model or specific tastes (see Appendix G). The defaults indicated are a reasonable starting point.
- To scale the volume plus adjust the rhythm tracks to a specific value, click the **AutoVolume/DrumMix Set** button. This may be the best option for converted styles where the relative volume of the instrument and drum parts has been destroyed.
- For manual editing, use the left mouse button, drag the individual channel volume sliders, indicating the peak volume setting for that channel, to a new setting (left =softer; right =louder), and then click on the adjacent

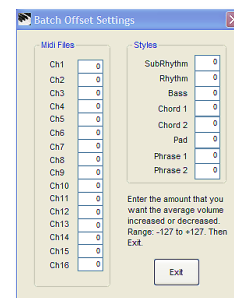
Set button. Alternatively, to change all channels simultaneously, move the All Channels slider and click on its **Set** button.

- To restore the original settings, click the **Undo** button. To preserve your settings, save the file.
- The colored warning indicators are generated by comparing the loaded file with the settings defined by the AutoSet and Volume Warning set-points. Adjust these to alter the warning ranges: High = average volume > average volume AutoSet point + Variation set point, Low = average volume < average volume AutoSet point - Variation set point, OK= between Low and High.
- The average volume is displayed in the Overall box and in the Midi/Style Volume display.
- The display for style files includes an identification of the PSR part (e.g. Bass) generated by that midi channel. Often, several midi channels are directed to play on the same PSR part channel depending upon the type of chord (major, minor, dim, etc. See: **View/Casm**) played, and should be adjusted to the same level.

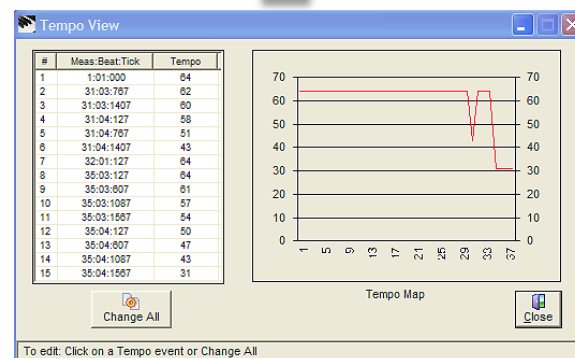
- If the slider is disabled, it indicates that this channel does not have any volume controller events and the volume cannot be adjusted by this version MidiPlayer. A style file with no part identification may be a dummy channel, i.e. with a volume event but no note data. Individual volume controller events may be viewed in **View/MidiData** and added/edited a sequencer.
- The Change Volume Events portion of the Volume View screen displays the settings for all midi channels in the file versus the measure location. **View/Marker** to locate style sections. A setting of 64 is midscale.

To edit a volume event, click on the event and enter a new value. To print the events, depress **PrintVolEvents**.

- Volumes are adjusted using AutoVolSet in Batch processing by checking the options in **Preferences**. To make specific adjustments to the AutoVolSet values while in Batch, depress **Edit Batch Offset** and enter values that will be added to the channels after AutoVolSet has been performed. A typical application is to boost or cut the volume of bass or rhythm channels.

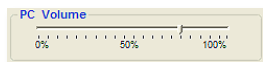


● Tempo View



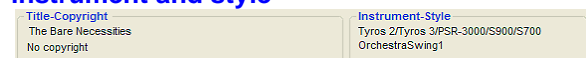
The initial tempo is displayed in the PlayList. However, many file include several tempo changes. To view/edit the tempo for the entire file click **View/Tempo**. To adjust any tempo, click on the tempo event and enter a new value. To adjust all tempos to one value, depress **Change All**. Use **View/Marker** to relate measure ranges with style sections.

● PC Volume Control



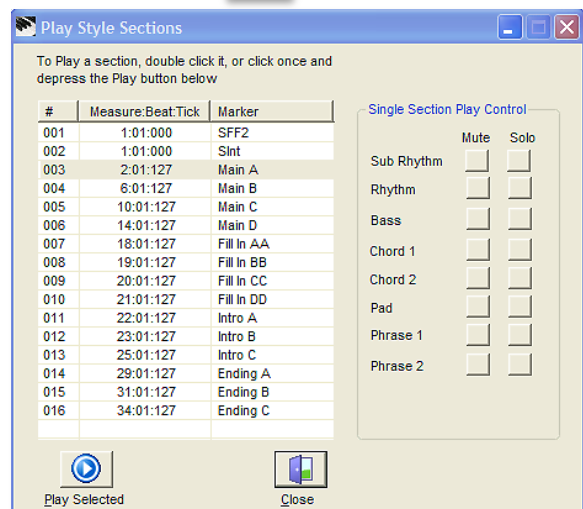
To adjust the playback volume when using a sound source on the PC (e.g. sound card or soft synth), using the left mouse button, drag the **PC Volume** control. This does not affect the volume when played on a PSR or other midi device.

● Internal name, copyright, source instrument and style



Information for the selected file is displayed at the top of MidiPlayer. Source and style appear if the midi was made in Quick Record on one of the later instruments, or in the Producer program.

● Marker View



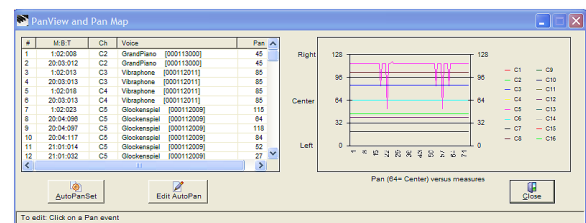
Marker events are displayed in **View/Markers**.

To play individual sections, select a section and then the **Play Selected** (or just **double** click the section desired). For styles only, the Section Play Control allows you to Mute or Solo sections of the style (e.g. Main A, Intro B, etc.). Check the desired options before depressing Play or double-clicking the section. Note: if you depress Play on the main screen with the Marker screen open, the selected section will repeat. Close the screen to play the entire style.

● Pan View



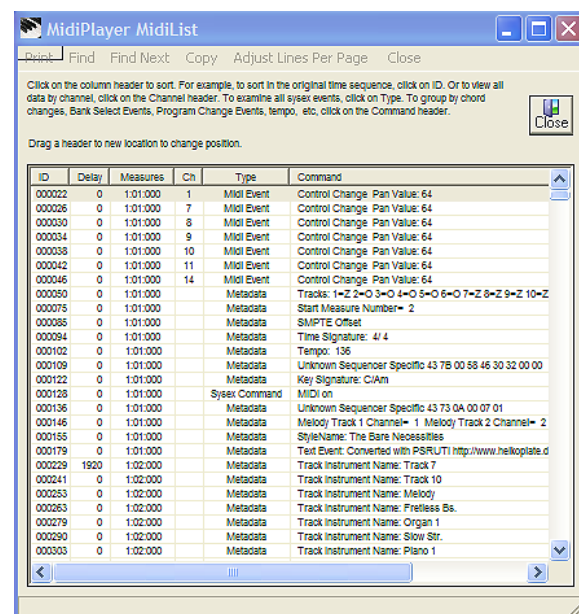
- The **View/Pan** screen displays the pan settings for all midi channels versus the measure location. A setting of 64 is centered and in some instances may indicate that the pan was not specified in the original file.



- To edit a pan, click on the pan event and enter a new value.
- To adjust all channels to predetermined values depending upon the instrument (similar to band or orchestral placements), click **AutoPanSet**.

To edit the AutoPan reference table, click **Edit AutoPan**. To save your edits, click Save and use the default name (MyPan) or select a new name. The table MyPan is automatically loaded when ViewPan is depressed. To use another table, click Edit Auto Pan/Open. To restore the original pan settings, load DefaultPan and save it as MyPan.

● Midi View



Depressing **View/MidiData** generates a list of all the midi commands in the file (after processing by MidiPlayer) with translations for the settings, where known. The list can be sorted, searched and printed.

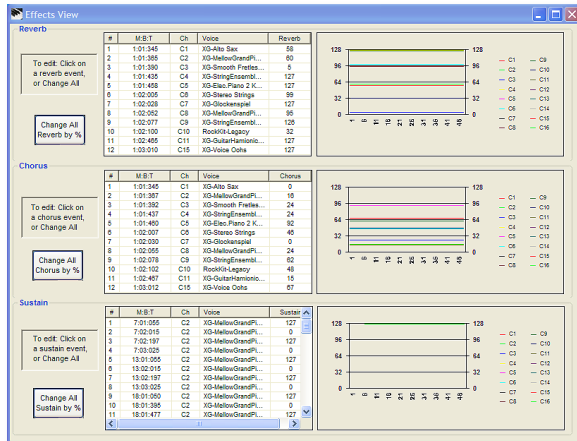
To sort, click on a column header.

Search for exact or partial matches by selecting the Find menu item. This function looks for any occurrence of the characters (Partial Match) or whole word (Exact Match) in any field in any line of the listing. The text search is case insensitive and begins from the beginning of the document.

To find the next instance of the search text, click on the Find Next menu item.

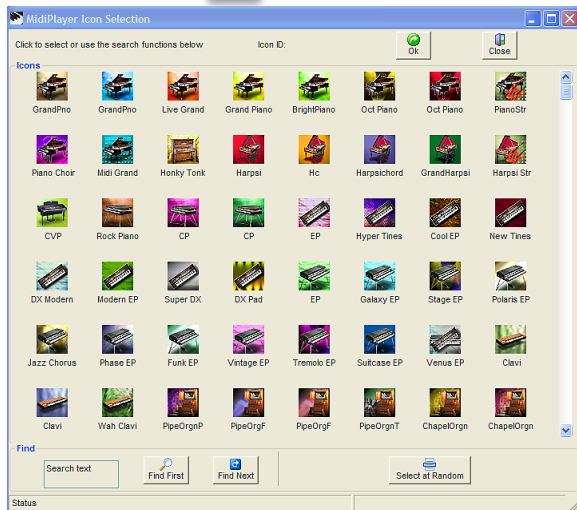
To copy the List to the clipboard, use Shift or Ctrl Click and the cursor to select the desired text. Click the Copy menu item. Your text is now on the clipboard. The header and list information is copied to the clipboard in tab delimited format viewable in Word Pad, NotePad, word processors, and spreadsheets such as Excel.

● Effects View



Depress the **View/Effects** button to display the Reverb, Chorus and Sustain settings in the file. To edit an individual setting, click on the event and enter a new value. To scale all events up or down by a percentage, click on **Change All** and enter the amount (100% leaves the settings unchanged).

● Icon View



The current icon is displayed next to the filename. To edit or to add a missing icon, depress the **View/Icons** button to display icons that are recognized in the later PSRs and Tyros. To select a new one, click on an icon, **Find** or **Select At Random** and then depress **Ok**.

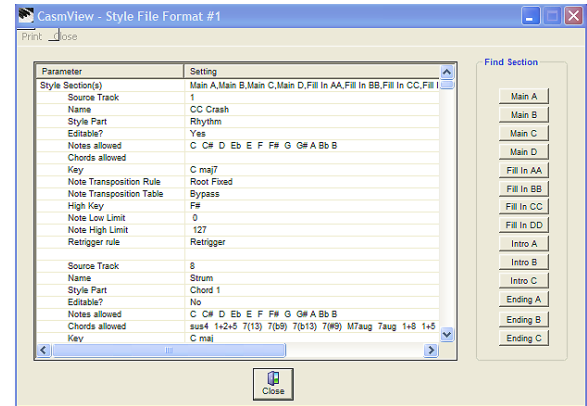
● Fixes View



As MidiPlayer opens and processes a file, it corrects conditions that can cause problems in PSRs. These corrections are either automatic, in response to program Preferences/Options (e.g. aftertouch), or to user commands (e.g. volume). To see a report of the corrections, click on the **View/Fixes** button.



● Casm View



Depressing **View/Casm** generates a listing of the Casm entries with translations of the settings where known. The list can be printed. The section buttons will scroll the display to a chosen variation, etc.

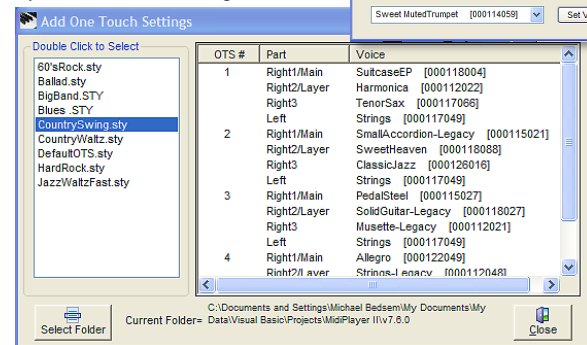
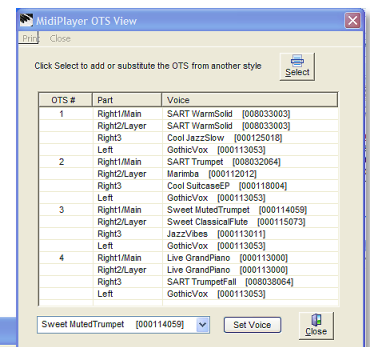
● One Touch Settings (OTS) View



To view the current OTS depress **View/OTS**.

To change a voice assignment in the OTS, select the voice, choose another from list at the bottom, and then depress **Set Voice**.

To add or substitute OTS from another style depress **Select** and **double click** on one of the styles. The OTS settings will be



displayed in the right hand box. You can change your selection by double clicking on another style.

The OTS style files provided with the program are limited in quantity and very general in nature. However, any Yamaha style containing OTS may be used as an OTS source. You can access your styles by clicking **Preferences/Options** and depressing the **Browse** button in the OTS Folder box to establish a default directory for styles used in the add OTS screen.

Alternatively, you can select the folder while in **View/OTS** by depressing the **Select Folder** button. This latter facility is

particularly useful where styles are organized into genre folders (Jazz, rock, etc).

If you never wish to be prompted to add a missing OTS, then uncheck the Prompt When Missing selection under [Preferences/Options](#). The normal setting is checked.

● Music Finder Database (MFD) View

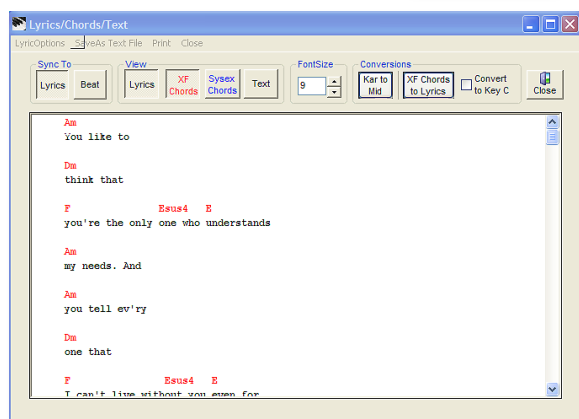
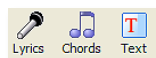


Music	Genre	Tempo	Time Sig	Keyword 1
A Night In A Wonderful Land	Instrumentals	108	6/8	60
Melody Of Dolannes	Instrumentals	84	6/8	70,panflute
Orchestral Madigan	Easy Listening	93	6/8	movie,classical
Serenade In Elizabethan Time	Easy Listening	93	6/8	60
Seven In The Morning	Easy Listening	93	6/8	60
Silento Trumpet	Instrumentals	96	6/8	50,brass
Slaves Will Be Free In Nabucco	Classical	93	6/8	classical,slaves,opera
Summer Place Theme	Screen Theme	93	6/8	60,movie
This Song Is Mine	Ballad	96	6/8	60,ballad

The [View/MFD](#) button displays the mfd database records in the currently selected style. Note that MusicFinder entries in Tyros 4 and later instruments are in an undecipherable format. The only way to view them is to depress Repertoire on the instrument with the style loaded.

Modern factory styles contain music finder records. These are used by the instrument to rebuild the default music finder. Any styles loaded to the User area will automatically have their mfd entries added to the instruments current music finder database and the user style's MFD.

● Lyrics, Chords, Text View



Depress the appropriate View button. The [LyricOptions](#) menu allows display of measure numbers, gridlines, events before the first lyric, and control of other parameters.

The events can be displayed as Lyrics (i.e. in sentence form, as in a lead sheet) or synchronized to the nearest eighth note (Beat). Beat boundaries are visible with [LyricOptions/ShowGridlines](#).

To make a printed version of the Lyrics display, click the [Print](#) menu item. To save a text file that can be loaded into the Tyros or PC programs, select the [SaveAs Text File](#) menu item.

Depressing the [KarToMidi](#) button will convert text events in Kar files to midi lyric events. You can request that this function be done automatically each time a file is opened by selecting it in [Preferences/Options](#).

Some programs such as Cakewalk only accept one word lyric events and remove all text after a space character. To replace spaces in lyrics with an underscore, check the box in [Preferences](#) and double click on the filename in the play list.

Clicking the [XfToLyric](#) button will add the Yamaha Chord Events to any lyrics, so that the chords will display in programs such as Van Basco's Karaoke Player.

Checking the 'Convert to Key C' box associated with the XfToLyric function transposes these chord lyrics (but not the XF events) to "C", and includes the appropriate keyboard transpose value to allow the user to play in this key along with the midi data.

To setup the PSR/Tyros to use the transposed chords: Load the converted midi and view the lyrics. Depress Function/Controller/ Keyboard/ scroll to Transpose and set it to Keyboard. Then adjust the value as indicated in the lyric display using the instrument's front panel transpose buttons.

Saving and Processing Files

● Save files manually



Click on the [Save](#) or [Floppy](#) buttons. The Save button allows user selection of the destination and filename. Floppy copies the modified file but with the same filename to the PC's "A drive". To ensure that files with a .sty are saved with the correct extension, in Windows Explorer/Tools/Folder Options/View, please uncheck 'Hide file extensions for known file types'.

Click [Process Save](#) to begin.

● File Problems

If you encounter strange problems when trying to view, save or rename style or midi files, please see Appendix H.

● Process a file with another program

Click the [GoTo](#) menu item. If you have programs on your system that will accept midi files in command mode, and have identified their location in [Preferences/Options](#), then the program will start with the file that was opened and processed in MidiPlayer. After working with the program, save the file using the default filename to keep your edits and exit. This will return you and the modified file to MidiPlayer. If you want to keep it permanently, be sure to save it before clicking on another entry on the PlayList.

One program highly recommended is PSRUTI. This is a powerful utility program designed expressly for PSR files. Its functions complement those of MidiPlayer and offers chord identification, lyric/chord recording /editing/save to text file,

internal song name change, velocity compression, controller editing, copyright edits and more.

When a file is edited in MidiPlayer or by an external program, the edited version is in local memory and may be edited, saved or played. The copyright and any data displayed in the Views use the local memory.

The data in the PlayList is not updated and reflects the status of the file when it was added to the play list.

Clicking on a PlayList entry will replace the local version with the PlayList version and edits will be lost.

Other Functions

● Mini MidiPlayer



Depressing the **MiniPlayer** button allows you to operate the program while doing other things on the computer. Click the Expand Icon on MiniPlayer to return to the main screen.

● Appearance menu item

- Checking **Hide Gridlines** suppresses the lines on the Play List.
- To restore default screen positions, check **Appearance/Restore default form positions** and open & close the window.

● To move screens

Depress the right mouse button while over an *empty area* and drag the window to a new location. The screen location is saved when you exit the screen and will be used the next time the window is opened.

● To access the Internet

Click on the Help menu icon and select the appropriate item.

- **Help/Internet** starts your default browser.
- **Help/E-Mail** initiates an email addressed to the author and can be used for support or other questions.
- **Check Net for Updates** displays the webpage where MidiPlayer releases are posted.

● Shortcut Keys

To aid the sight impaired, most operations in MidiPlayer can be executed using shortcut keys. These keys are identified in the menu items by an underlined letter. For example, to add a file to the PlayList, while holding down the Alt key, depress F (for File) and then O (for Open). See Appendix B for a complete listing of the shortcut keys.

Appendix

A. Voice numbers:

GM subset of the XG voices have MSB and LSB =0, e.g. [000000xyz]

XG voices have MSB =0 and LSB < 102, e.g. [000016xyx]

General panel voices have MSB=0, LSB > 101, e.g. [000112xyz]

MegaVoices have MSB=8, e.g. [008001xyz].

Drums have MSB=127, LSB=0, e.g. [127000xyz]

B. Shortcut Keys

File Control (Two letters required)

Alt F then

O	Open file
S	Save file
F	Floppy
X	Exit

Midi Device: Alt D

Help & Information (Two letters required)

Alt H then

M	Manual
Q	Quick Start Guide
B	About
E	E-mail author
N	Internet
C	Updates

Goto Support Programs (Two letters required)

Alt G then

P	PSRUTI
S	Sequencer
C	Casm Editor
O	Other

Preferences (Two letters required)

Alt P then

O	Options
---	---------

Appearance (Two letters required)

Alt A then

L	Launch MiniPlayer
H	Hide file details
R	Restore default window positions

Toolbar Commands (Three letters required)

Alt T then

S	Setup then
I	Instrument, then up or down arrows to select choice, and then Enter
V	Voice, then up or down arrows to select choice, and then Enter
D	Midi Device, select choice then Enter
M	MidiVolume then
A	AutoVolSet
M	AutoMix
U	PC Volume

V	View Bar then
V	Voices
U	Volume
E	Tempo
A	Marker
P	Pan
D	MidiData
F	Effects
I	Icons
X	Fixes
C	Casm
O	OTS
M	MFD
L	Lyrics
C	Chords
T	Text

P	Play Bar then
P	Play
S	Stop
A	PlayAll
R	Repeat
B	Batch

L	Play List Bar
A	Add
D	Delete
C	Clear
L	Load PlayList
S	Save PlayList

Close windows with Alt C.

C. Editing Style Voices

Unlike midi files, style files redirect the data on source channels to destination channels that correspond to the 8 PSR accompaniment channels: 8=SubRhythm, 9=Rhythm, 11=Bass, 12=Chord 1, 13=Chord 2, 14= Pad, 15= Phrase 1, 16= Phrase2. The channel numbers in the [View/Voice](#) Program Change display correspond to the midi source channel numbers, not the PSR destination channels.

To determine which source channel (or channels, there is often more than one source channel for each destination channel) corresponds to a given destination channel, click on [View/Volume](#). This will display the channel versus part assignments that are made in the CASM section of the style. Generally, these assignments are the same in all sections, but if they are reassigned, then MidiPlayer uses the first occurrence. To examine assignments in detail, look at the CASM with [View/Casm](#).

In cases where no style part is displayed, it may be due to no CASM or problems in the CASM. In this case, you may be able to recognize the proper program change events by the instrument used.

D. Instrument and Style Number Display

Some Yamaha instruments include a sysex message that identifies the instrument and the style used to create a midi. When this information is found, it is displayed in the [Instrument/Style](#) box. MidiPlayer includes style lookup tables for most PSR/Tyros. For other instruments, the style will appear as the number of its appearance in the Style List in the manual.

E. Disabling After Touch Amplitude and other Problem Sysex Events

Some midis, created on the PSR-9000 and including After Touch events, may play strangely (e.g. volume jumps) on Tyros1&2. After Touch events can be disabled by checking the appropriate box in [Preferences/Options](#). Since After Touch is an important contributor to a midi's sound, it should be enabled whenever this problem is not evident.

By default, MidiPlayer disables any auto accompaniment start events and some lyric control events (sysex ending with 00 20 24 00 08 F7) that are known to cause problems with Tyros/PSR displays.

F. Customizing a Instrument Voice List

You can customize one of the voices lists supplied with MidiPlayer so it matches your instrument or your needs (e.g., you could remove the XG voices if you never use them).

The files are in the install directory with the file name Instrument.dat (e.g. PSR-1000.dat). Small changes can be made in Word, Word Pad or Notepad. You do not have to change the extension to open the files in these programs. When you save the file, make sure that it is saved as file type txt, with the name unchanged, to the install directory.

It is recommended that you start with a file that is similar to that of your instrument. Once edited, just use the name of the instrument to access your file (e.g. if you edit the PSR-740 for the PSR-730, leave the name as PSR-740.dat and select the 740 in the [Setup/Instrument](#) box.

The elements in the file have the format: voice name, a semicolon (;) followed by the "Msb Lsb Program#" as a 9-digit text string and a carriage return/line feed. Note that numbers such as 16 always have leading "0s" (e.g. 000016002 is Msb=0, Lsb=16, PC=2). Be sure that there are not any extra line feeds or carriage returns (no blank lines) and that there are no duplicate entries. These errors will prevent the file from loading properly.

The file can be in any order, but most users prefer to group all the pianos together, etc. The easiest way to do this is to organize the list by ascending program number.

Users that have an instrument using the XGLite set of voices (e.g. DGX 620 / 520 and YPG / 625 525) can gain access to the voices by renaming the DGX620VoiceFile.dat in the C:\Program Files\MidiPlayer folder to PSR-740.dat.

G. Volume Settings

Each midi channel may include many volume controller events. On [View/Volume](#), the one displayed as a channel's individual volume is the largest volume control event on that midi channel. This is done to warn the user that, once the maximum (127) for the peak event is reached, it cannot be increased further and the relative mix between the various volume events will be altered.

The LED and Vol value in the Midi/style Volume box on the main screen and the Vol box on the View/Volume screen display the average of all these peak controller events. This is done to provide a measure of the overall midi/style volume that can be used to compare overall volumes between midi/styles.

If a style's slider is active, but no part (e.g. Bass) is assigned, then it indicates that this part was not used and defined in the Casm.

The midi and style volume set points are somewhat arbitrary and depend upon the instrument used, the type of music and user preference. The 'typical settings' have been selected for the general compatibility with Yamaha Tyros styles and midis made on the PSR. Do not hesitate to select your own values. As with all other options, any changes will be remembered between sessions.

H. Configuring Windows for Style Files

Periodically users report problems trying to access, view, rename or save style/midi/voice files. To eliminate these problems, please go to Windows Explorer/ Tools/Folder Options/View Tab and confirm the following settings:

'Hide extensions for known file types' is unchecked.
'Display the content of system folders' is checked.
'Show hidden files and folders' is checked.

I. What Is New in Midiplayer

Enhancements since Version 6.0.1

- Tyros 4 added. (8.1.9)
- Windows 7 version released. (8.0.9)
- Added ability to select a default icon for Batch processing. (8.0.1)
- Added PSR-S710. (8.0.0)
- Expression events initialized to 127 to reset instrument if left in undefined state. (7.9.6)
- Improved the algorithm to set auto volumes. (7.9.5)
- Improved accessibility for the sight impaired. (7.9.3)
- PSR-S9190 added. (7.9.1)
- Icons are updated for the Tyros 3 & Batch Volume Offset function added. (7.7.0)
- Included a program to change the MidiDevice for Vista. (7.6.3)
- Completed T3 voice corrections and revised manual to PDF format with graphics. (7.6.2)
- Voice View redesigned and added Custom Revoicing (7.6.0)
- Tyros 3 capability and use of the default browser added. (7.5.0)
- Corrected S900 and 550 voices. Open now includes a filter for file types. Added the S700. (7.4.0)
- Improved the ability to process midi files obtained from the Net. (7.3.1 & 7.3.2 & 7.3.3)
- Batch now includes an option for adding a randomly selected icon to a file that does not have one, or adding "_MP" to the filename to identify its origin. (7.2.2, 7.2.3, 7.3.0)
- Corrected the links to svpworld (7.2.1)
- MidiPlayer had a bug that inhibited the style and instrument name from displaying for PSR-2000 quick record files. (7.9 & 7.2.0)

- Corrected problem sending a file to PSRUTI; included corrected PSR-9000.dat plus 620lite.dat and Disklavier.dat files (7.1.8)
- Allow all effects with zero values to display in Effects View; Reports S900 as an instrument type(7.1.6)
- Inclusion of DGX620 XGLite voice file(7.1.5)
- Support for PSR-S900 files and conversions to/from other instruments.(7.1.4)
- Corrected a missing voice for the PSR-9000. (7.1.2)
- Allows GM2 voices for Tyros, Tyros2, and PSR-3000/1500 when set to Voice=Panel & XG; for other instruments converts GM2 drums to XG (MSB=127) and instrument voices to default panel(LSB=112). (7.1.1)
- Modified file size warning; fixed bug that added .mid when a vce extension was in caps. (7.1.0)
- Added the facility to print a list of the volume events to the Volume View. (7.0.9)
- Corrected a condition that prevented batch processing of a large numbers of selected files. (7.0.8)
- Fixed condition in Batch Mode where processing a pad would cause other files to save in midi type 1 format. (7.0.7)
- Corrected problem that prevented some style files from saving in Batch Mode, edits to the manual (7.0.4), enabled the fix for RPN error which had been disabled (instrument = PSR-2000 only) (7.0.5).
- Multipad channel selector added. (7.0.1)
- Improved graphics (7.0.0)
- Part Mute/Solo added to Marker View for styles (6.9.9)
- Save Lyrics View as delimited text file. (6.9.3)
- Control for changing default midi device. (6.9.2)
- Word version of manual; link to beta site for updates ; uses default e-mail program (6.9.1)
- Midi View and Chord View now display sysex chord events in addition to XF chord events.(6.9.0)
- Revoicing and support added for PSR-550 and PSR-450.(6.8.7)
- Reports and prevents the processing of styles with an illegal Break DD or where the recorded Casm length does not agree with the file data. These problems will cause the Tyros/PSR to freeze, necessitating a power restart. (6.8.6)
- The program corrects any style files that are missing volume events, displays a volume map, and provides editing of individual volume events in addition to the averages (6.8.1).
- Corrected bug in CasmView that ended program when a non existent section was selected (6.7.6).
- Corrected bug in Batch Mode that improperly re-voiced style tracks 1 to 4 if an OTS of the corresponding number contained piano voice 000112000, Spanish guitar 000113024 or classic guitar 000112024. (6.7.5)
- Program uses original icon ID in batch processing; Maps mega Nylon to mega Hi Strings for T1 and 3000; Changes to sysex decoding; disables midi as well as sysex CAT events if option is selected (6.7.4).
- Corrected bug that caused two "." to be placed in a file when no icon is selected (6.7.0).
- Copy and find functions are available for searching to MidiList (6.6.7).
- Corrected bug that was not processing XG SFX during conversions (6.6.9)
- MidiList displays the name of the voice in addition to the number (6.6.6).
- Displays and allows editing of the icons used to identify midis, styles, and pads (6.6.4).
- Reverb, Chorus and Sustain effects settings can be viewed, edited and scaled by a percentage value (6.5.4).
- MultiPads can be viewed, played and the voices and volumes edited (6.5.1).
- Allows drag and drop to Play List while in Play All (6.5.0).
- Added PlayAll to the mini player (6.4.9).
- PlayAll starts from currently selected play list item instead of the beginning (6.4.7)
- Play List has a background picture and an option to hide gridlines (6.4.6).
- Corrected conversion of Brass Falls, SA Spanish Guitar, and some SA trumpets; Accent Falls not converted for any instrument (6.4.5).
- Corrected a bug that created duplicates of type 1 midi files in batch mode (6.4.4).
- Correction of bug that disabled some MegaVoices during conversions (6.3.8).
- Improved auditioning of styles using PSR/Tyros as sound source (6.4.1).
- Support for Tyros 2 files and conversions to/from other instruments.
- Plays and saves wav files (the file type generated by T2) or mp3 files.
- Supports for Voice files (.vce, etc) include display/edit of voice, tempo, effects, and icons; display only: midi data.
- Increases X3 the number of files that can be added by selecting names; improved error trapping when limit is reached. Number is unlimited using Drag & Drop (6.3.9).
- Inclusion of GM2 voices (Tyros 1&2).
- Choice of Panel, SART, Mega, GM2, XG and All voice types in Voice View.
- Enhanced conversion of OTS voice assignments.
- Removes requirement that the program be installed in C:\Program File\MidiPlayer.
- AutoStop option for use if style notes continue to sound after Stop is depressed (with some instruments).
- Translates all Latin Kit events to standard kit.
- Halts batch processing when a floppy is full.
- MidiList now sorts by channel column numerically.
- Disables Roland drum notes that reproduce as handclaps.
- Missing voice descriptions translated to GrandPiano in Volume View; missing tempo MBT placed at 001:001:000.
- Eliminates error when Email and Lyric View were minimized.
- Removes an error generated by some large midis.
- Fixes a bug that exited program when some files were accessed in View/Lyrics.
- Fixes error generated if >1 file was drag/dropped to the exe file in Explorer.
- Corrects a problem in the conversion for bass megavoices.
- Added steel and dyno voices to T1/3000 mega conversion.
- Fixed incomplete Set Global manual voice assignments.

- Properly updates filename in miniMidiPlayer.
- Prevents crash if a zipped archive is dragged to the program.
- Corrected spelling errors in program and instrument voice and style name files.
- Play/Stop button on Volume View tracks those on the main screen.
- Removes an error with large play lists and some very large files.
- You can now select the sections and the length of time when Quick Auditioning styles.
- Main A will be substituted if a style played in Quick Audition mode does not have any of the sections defined in the Preferences/Edit Audition Sections.
- Styles sound better when auditioned from MidiPlayer on a PSR or Tyros.
- OTSView now supports changing of individual voices. Select a OTS item, select a voice and Set!
- You can now automatically resize the PlayList columns by right clicking on the PlayList and selecting Adjust Column Widths.
- A identification and count of the sections within a style (e.g. M4 I3 E3 F5) is displayed on the PlayList.
- You can right click on a PlayList entry to rename the source style. This is useful for cataloging styles (e.g. Xmas, BritPop) or flagging the ones you have not interest in.
- A file's position time is displayed in a darker color and in MBT (Measure:Beat:Ticks) format.
- Accessibility functions for the sight impaired have been improved.
- MidiPlayer now remembers the last position set for Marker and Voice Views.
- Casm View is may be resized.
- Marker View is more concise and smaller.
- Transpose correctly handles negative values.
- All Types voice filter properly functions.
- PSR-S910 functionality added

J. Changing the style used as an OTS source in Batch processing

Any style can be used as a source for adding any missing OTS sections encountered in [PlayList/Batch](#) processing. Simply replace the style DefaultOTS.sty in C:\Program Files\MidiPlayer with one you prefer. Alternatively, use MidiPlayer to open the DefaultOTS.sty and use view [View/OTS](#) to select a new OTS.

K. Drum Kit Conversion

If the GM Sound Card is selected in [Setup/instrument](#), XG brush note events and drum notes which are outside the GM range will be converted according to the following table (XG Note # = GM Note #):

13 = 43	14 = 45	15 = 73	16 = 42	17 = 69	18 = 69
	19 = 76	20 = 62			
21 = 80	22 = 81	23 = 68	24 = 75	25 = 70	26 = 69
	27 = 70	28 = 69			
29 = 46	30 = 37	31 = 38	32 = 37	33 = 35	34 = 40
	82 = 69	83 = 54			
84 = 58					

If the GM Sound Card is *not* selected in [Setup/instrument](#), then any drum note 39 events (which plays as Handclaps in the PSR), will be muted.

L. Associating file types

1. In Windows Explorer, navigate to a file of the type you want to associate (mid, sty etc.).
2. Click on its icon once to select it.
3. While holding the shift key down, right click on the icon. (Note: Holding the Shift key down is not necessary in Windows 2000 and Windows XP.)
4. In the pop-up menu, choose Open With... A box will open asking you to choose a program to open that file type.
5. Pick a MidiPlayer from the list.
6. If MidiPlayer isn't in the list, choose [other] to navigate to C:\Program Files\MidiPlayer.exe on your hard drive.
7. Put a checkmark in the box that says: Always use this program to open files of this type.
8. Similar associations may be established for style file using the extensions .sty, .sst, .pcs, .bcs, .prs, and .pst.

M. Corrections to midi and style files.

MidiPlayer automatically repairs potential problem as the files are played or saved. The 'fixes' include:

- Disable after touch commands that cause volume problems
- Replaces missing voices with ones that exist on the target instrument
- Defeat sysex detuning commands
- Disable any accompaniment start commands
- Disable lyric commands that confuse PSR displaysResets master tuning to 440Hz
- Add or remove an OTS section
- Add Yamaha Bank Select commands to enable XG voice selection
- Adjust midi/style volume to a predefined level
- Redirect ch 9 to ch 10 for GM sound sources
- Fix command which causes unexpected transpose in PSR-2000 quick record midis
- Balance instrument/drum mix to predefined level
- Shift drum notes if Latin kit is missing
- Translate drum notes between GM and XG
- Add missing midi volume events
- Add XF Chords to Lyrics
- Add missing pad events
- Convert file from type 1 to type 0 to enable editing in MidiPlayer and PSR
- Convert Kar files to midi for PSR lyric display
- Reports when it is unable to process sysex format voice specifications
- Warns when styles are too big for certain instruments
- Removes formatting lyric commands that disturb some displays
- Removes the command that starts style playing when a midi is loaded
- Reports when the tempo is changed
- Acknowledges editing of pad events
- Corrects voice bank specifications used by midis developed for sound cards
- Corrects null after touch amplitude events in OTS
- Disables Roland drum notes that reproduce as handclaps on the PSR

- Reverb, Chorus or Sustain settings changed
- Reports and prevents the processing of styles with an illegal Break DD or where the recorded Casm length does not agree with the file data. These problems will cause the Tyros/PSR to freeze, necessitating a power restart.

N. Screen layout and font problems

MidiPlayer uses Arial in size 8 for the screen buttons and text. If all the screen buttons are not visible, then you may have altered the default Windows font setting. To correct, in Start /Control Panel /Display /Appearance /Font Size and change the setting to Normal.

The screen location is saved when you exit the screen and will be used the next time the window is opened. To restore factory defaults, check [Appearance/Restore default form positions](#) and open & close the window.

O. Corrective action for styles with Break DD or Casm size errors.

Break: Use Creative StyleMaker (see <http://www.jososoftware.dk/yamaha/software/csm/index.htm>) to remove. Just Open and Save the style.

Casm size problem: Load the style into the instrument, add an OTS and Save the style when prompted. This process rebuilds the Casm and corrects the file. If unsuccessful, load into Creative StyleMaker and save with "Use Old Casm" unchecked.

P. Custom Revoicing

Custom Revoicing changes the Assigned Voices displayed in Voice View because these are known to exist on the target instrument and the revoicing list is customized for each instrument. To revoice the original voice, select Voice = Unchanged.

Q. How to add Voice Assignments if missing in your file.

[Goto PSRUTI](#)/Revoicing/Standard Revoicing and depress OK then Save and Exit.

R. If operating under Vista or Window 7.

Install the program as an administrator by right-clicking the installer file and select "Run as Administrator". Answer "yes" to the warning message.

If installed, use Windows Explorer, navigate to the C:\Program Files (x86)\MidiPlayer folder and mark MidiPlayer.exe file to run as an administrator by

- Right clicking the program and select Properties.
- Under the compatibility tab, select Run This Program as an Administrator.
- Click Apply and OK.

User's Agreement

By installing this software, the user signifies agreement with the following:

The author, Michael P. Bedesem, copyrights this software with all rights reserved. The author retains all title and intellectual property rights.

No warranty is made regarding the suitability of this software for any application, that operation will be uninterrupted, or error free. The author is not responsible for problems that result from installing or operating this software, and shall in no case be liable for special, incidental, consequential, indirect or similar damages arising howsoever.

The user agrees not to make changes or modifications to the software and not to decompile, disassemble, or otherwise reverse engineer the software.

The software is provided free for private, non-commercial use. The user agrees not to sell this software or bundle it with other software for commercial enterprise, without the express written consent of the author.

The software may be distributed to other users as provided above as long as all components, including this agreement, are included.

The user is responsible for using this software legally and in accordance with any copyrights that may pertain to third party style files.

This agreement constitutes the entire agreement between the author and the user, and may be modified only by written agreement between the parties.

Communication & Support

Any questions, comments, suggestions for modifications or improvements, or problem reports would be most welcome. Please forward these to the author at mpb@sover.net.

Acknowledgements

MidiPlayer is one of several programs in the StyleManager Series that is intended to give users the ability to work around common annoyances, overcome operating discrepancies between instruments, or facilitate the management of PSR Style, Midi and Registration files.

The development of this program was triggered by the incompatibility of Tyros midis when played on other PSR instruments, and at the request of many frustrated users.

Simon Williams was the first to request that the functionality provided for midi files be extended to stylefiles. It turned out to be a very good way to deal with the Tyros and other style file problems. Thank you, Simon.

Once again, Frank Hand has devoted considerable time, energy and ingenuity to wringing out the bugs. His testing has helped make this program better and his ideas have made it much easier to use. MidiPlayer probably would not have existed in this form without his assistance.

Bob Durham is responsible for creating the PSR-1000 instrument file and testing the program with this instrument. He also has made numerous suggestions that I have

incorporated into the program. His careful testing in a broad range of areas has eliminated several problems and greatly improved the quality of the program.

Joe Walters gave the program a good work out and along with Bob Durham discovered that I had forgotten to revoice the OTS sections. Joe also suggested that the program remember the current open and save folders, and both kept my nose to the grindstone until I got the Tempo setting to work properly.

Bob Gelman helped me establish the 9000 compatibility with extensions other than .sty & .sst, and, along with Vince Cochran, has provided midis for calibrating and testing the PSR-9000 style detection.

Alex (arsclara@globo.com) tested MidiPlayer on the 640 and found a mode of operation in the OTS suppression that needed to be corrected. It was his careful observations that really identified the source of the problem.

Alan Jackson has assisted by making a PSR-9000 style list. It turns out that the 9000 uses a different system for numbering Flash Styles. Thanks to Peter Wierzba for discovering the correct access method and for the final 9000 style file.

Roger Miners was the first to bring the midi detuning problem to my attention I had encountered it myself over the years, but forgot about it while developing MidiPlayer. It turned out that some midi developers actually use two separate methods to detune your PSR/Tyros! Roger and MidiPlayer have fixed that problem.

Tony Iacobucci noted that it was difficult to conveniently edit style/midi tempos. This facility is now included thanks to him. He also noticed occasional problems in setting the midi file volume and provided the test files that enabled me to find the problem. Tony, along with Frank Hand, requested the channel volume facility that was included in 2.2.4, and he found a bug in 2.2.6. Nice work, Tony!

Bob Porento and Frank Hand contributed valuable edits to the 740 voice file released with version 2.2.2.

JoeWalters was of immense help checking 2.2.5 and found a bug with the OTS conversion functions as well as errors in the voice files.

Peter Wierzba reported a drag & drop followed by an instrument change could generate a recoverable error in 2.2.5. With his assistance, I found it.

Robby reported that tempo edit did not always work in 2.2.7. It did for files that had only one tempo, but now it works every time.

John Vernon has made a number of useful suggestions including the Spacebar play control, the Adopts option and style section play. He was also one of many who requested the play timer and the multiple file/batch processing facility.

Tom G requested the ability to view OTS settings when selecting a source style. It was a good idea.

Many thanks to Heiko Plate for allowing his program PSRUTI (available at: <http://www.heikoplate.de>) to be used in conjunction with MidiPlayer. It is an excellent program that provides many functions that are needed but not available in MidiPlayer.

Jaap Veneman contributed the idea of having a folder selection as part of OTS View to facility access to style files organized by genre. He also requested the copy and voice decoding of the MidiList.

Many thanks to the beta testers of 3.7.0 that worked to find the bugs and suggest new features. These include Lionel [lionel93@freesurf.fr], Mike Kelly [m.kelly77@ntlworld.com], Alan Jackson [ajackson@waitrose.com], Bob Durham [r3d3@onetel.net.uk], Chris Easdown [CEASDOWN@dow.com], Brian Miles [milesmusic@tesco.net], Tom G. [tomtomsf@aol.com] and Bruce Spangler [bspangler@estreet.com].

Mike Kelly deserves special mention for his persistence and unwavering support in finding a problem that occurred only with certain styles and only with the "to host" midi interface. It took weeks, but we finally got it solved. Mike has been instrumental in testing all versions including MP II and has made many contributions to the program.

Bob Durham has given the program particularly good workouts over many versions and many months, and is responsible for a large number of improvements in appearance and performance.

Rikki [rikkisbears@hotmail.com] requested the conversion of XG drum events to conform to the standard GM range when a GM Sound Card is the selected instrument and she provided the translation table that is used by the program.

Jan [leliv123@planet.nl] discovered that the chord function was not detecting mM7 events. It was fixed in 4.1.5.

Heiko Plate, the author of PSRUTI, has graciously allowed MidiPlayer to use the functions from his hp_midiFile library to perform the conversion of type 1 midi files to type 0.

Tony Lewis spent considerable effort evaluating version 5.7X and identified many problems in addition to making useful recommendations. Thank you Tony!

Lawrence [lawrence@3rddawn.freeseerve.co.uk] requested the support for the PSR-1500 and was instrumental in developing the necessary .dat files.

Bob Gelman, an old friend who has encouraged me from the beginning and contributed many ideas for my program, is responsible for the MultiPad compatibility and voice/volume editing facility.

Johnny Bonde requested the facility to edit and scale effects.

Dušan, on the psrWorld, made a special request to be able to modify the icons used by the PSR/Tyros for styles, midis, voices and multipads. It was a reasonable request, and with the assistance of Kim Winther, the author of Registration Memory Editor (www.kwmusik.dk/Tyros), it is in 6.6.4.

Peter Pienaar requested the addition of the PSR-450/PSR-550 and provided the instrument files.

Renato requested that sysex chord events be recognized and displayed in addition XF chord events. This was included in 6.9.0.

Phil Hall provided the files and testing necessary to include support for the PRS-S900.

Many thanks to Mike Head for creating the DGX620 XGLite voice file and making it available to all.

Don (Crazy Z) found some problems in the PSR-9000 voice file and contributed a corrected version that is included in V718.

Special mention to Zdravko Obratil who worked with great patience to correct the voice assignments in Version 7.6X.

Brian Miles suggest a facility that would allow boosting or cutting volumes of specific channels (e.g. boost the bass) while processing in Batch. This was included in Version 7.7.0.

In the process of testing Version 7.7.5, Larry Hawk found screen problems that he traced to a vulnerability to an OS DPI setting >96. This can be a consequence of selecting Large Fonts, running the program on desktops/laptops programmed for higher resolutions, or user selection. Because of his effort, the problem has been corrected.

John Vernon, after auditioning a lot of styles and midis, made a number of suggestions including source style rename, edit Quick Audition sections, column adjust, edit OTS voice, etc. These have been implemented in Version 7.8.4.

Pieter Tabbernee called my attention to a number of style files that that did not respond properly to AutoVolSet. This led to in a major change in how MidiPlayer performs volume normalization and initialization of a style's expression settings. Version 7.9.6 was the result of this effort. Thank you to Pieter for reporting the problem, the files and testing 7.9.6.

Ash asked me to include the S710 in MusicFinderView. After that I added it to MidiPlayer.

Many thanks to Ed B who helped located some errors in how v8.1.9 was replacing voices for the S910.

PSR-S950 and PSR-S750 support added in version 8.3.0

Michael P. Bedesem
Version 8.3.0
11/30/12